



# Rochester Community Schools 2013-2014 Annual Educational Report Cover Letter

August 18, 2014

Robert Shaner, Superintendent

Dear Parents and Community Members:

We are pleased to present you with the Annual Education Report (AER) which provides key information on the 2013-2014 educational progress for Rochester Community Schools and our schools. The AER addresses the complex reporting information required by Federal and some requirements of State laws. Our staff is available to help you understand this information. Please contact Irene Larson, Director of Assessments, Grants and Compliance, for help if you need assistance.

The AER is available for you to review electronically by visiting the following web site <http://www.rochester.k12.mi.us/pages/45967/annual-reports> or you may review a copy in the principal's office at your child's school.

The report contains the following information:

**Student Assessment Data** – Elementary or middle school assessment results on the Michigan Educational Assessment Program (MEAP), high school assessment results on Michigan Merit Exam (MME), and assessment results for students with disabilities on Michigan's Alternative Assessment Program (MI-Access or MEAP-Access)

- Presents achievement data for all five tested subjects (mathematics, reading, science, social studies and writing) compared to targets for all students as well as subgroups of students.
- Helps parents understand achievement progress within schools and compare these to district and State achievement.

**Accountability Scorecard – Detail Data and Status**

Information is provided for the district and each school related to achievement targets in reading, writing, mathematics, science and social studies answering questions like:

- Did the district (and schools) meet achievement targets for all students and subgroups of students?
- Did the district (and schools) meet achievement growth targets for all students and subgroups of students?

**Teacher Qualification Data**

- Identifies teacher qualifications at district and school levels
- Reports percentage of core academic classes taught by teachers not considered highly qualified to teach such classes

**NAEP Data (National Assessment of Educational Progress)**

- Provides State results of the national assessment in mathematics and reading every other year in grades 4 and 8

The state has identified some schools with the status of Reward, Focus or Priority. A Reward school is one that is outperforming other schools in achievement, growth, or is performing better than other schools with a similar student population. A Focus school is one that has a large achievement gap between the highest performing students and the lowest performing students within a single school building. A Focus school label does not necessarily imply low achievement for a school as a whole. A Priority school is one whose achievement and growth is in the lowest 5% of all schools in the state. Some schools are not identified with any of these labels. In these cases no status label is given. The table below lists the status of each of our schools. The majority of schools in Michigan did not receive any of these specific labels.

School Name	Status Label	Key initiative to accelerate achievement
Brooklands Elementary School	Focus	Reading Intervention programs including Reading Recovery
Hampton Elementary School	Focus	Reading Intervention programs including Reading Recovery
McGregor Elementary School	Focus	Reading Intervention programs including Reading Recovery
Reuther Middle School	Focus	Academic and Behavior intervention programs.
Baldwin Elementary School	Reward	
Brewster Elementary School	Reward	
Delta Kelly Elementary School	Reward	
Hugger Elementary School	Reward	
Musson Elementary School	Reward	
North Hill Elementary School	Reward	
University Hills Elem. School	Reward	
Hart Middle School	Reward	
Van Hoosen Middle School	Reward	
West Middle School	Reward	
Rochester Adams High School	Reward	
Hamlin Elementary School	No Label	
Long Meadow Elementary School	No Label	
Meadow Brook Elementary School	No Label	
Rochester High School	No Label	
Stoney Creek High School	No Label	

Rochester Community Schools congratulates those schools who have been designated as Reward Schools, and acknowledges the dedication and efforts on the part of staff, students and parents in achieving this recognition. It is important to note that Rochester Community Schools has implemented school improvement processes and targeted interventions to address gaps in student achievement in all of our schools, regardless of their status. We will continue to monitor and assess these strategies as we work toward the goal of ensuring all students are college ready, career ready and life ready.

## **Rochester Community Schools Mission Statement**

*"To provide a quality education in a caring atmosphere for students to attain the necessary skills and knowledge to become lifelong learners and contribute to a diverse, interdependent and changing world."*

### **Vision Statement**

*Rochester Community Schools Students will be college ready, career ready and life ready.*

### **Process for Assigning Pupils to the School**

Students continue to be assigned to schools by grade level according to the district attendance boundaries. Students residing in the district may request open enrollment in a school other than the one to which they are assigned during the Open Enrollment period. Open enrollment is approved on the basis of staffing and capacity in the building.

Alternative Center for Education (ACE) students are identified and assigned to ACE High School through the District's intervention model for struggling high school students.

### **Status of the 3-5 Year District Improvement Plan**

The District Improvement Team worked in conjunction with the District Instructional Leadership Team to develop the four goals listed below. The goals as well as the related strategies and activities focus on student learning and were based on a review and analysis of demographic, achievement, process and perception data. The District Improvement Goals support and align with the School Improvement Goals developed by each school providing the District with a clear focus and course for continuous improvement.

#### **Goals:**

##### Goal 1: Literacy

All graduates of the Rochester Community Schools will be College Ready, Career Ready and Life Ready in reading and writing across the four content areas.

##### Goal 2: Mathematics

All graduates of the Rochester Community Schools will be College Ready, Career Ready and Life Ready in Mathematics.

##### Goal 3: Science

All graduates of the Rochester Community Schools will be College Ready, Career Ready and Life Ready in Science.

##### Goal 4: School Culture

Rochester Community Schools will maximize student learning by developing a school culture in which all students and staff are safe, respected and valued.

## **Core Curriculum**

Rochester Community Schools continues to implement a comprehensive curriculum for all students. The curriculum is based on and aligns with the Michigan Department of Education's Michigan Curriculum Framework and the Grade Level Content Expectations (GLCE's) in grades K-8 and Course Content Expectations (CCE's) in grades 9 – 12. Teachers have met throughout the year to continue aligning the curriculum to the Common Core State Standards. Our teachers have worked in collaboration with Oakland Schools to develop sample units of study in ELA and Math.

During the 2013-14 school year the curriculum department continued to focus on developing a Multi-Tiered System of Support to meet the needs of all students, providing alternative educational experiences for students, and providing more flexible time for student learning beyond the traditional school day.

Elementary teachers continued to implement strategies for effective instruction in all subject areas. All district professional development in-services focused on new units of study in reading, writing and math. These units were developed through MAISA at Oakland Schools. Teachers received copies of the units along with mentor texts and other resources needed to implement the units. Time was dedicated to collaboration with colleagues to become familiar with the materials and follow up at subsequent workshops. 4th and 5th grade teachers participated in a workshop about launching complex tasks in mathematics. In Science, teachers continued using inquiry-based units of study in the areas of life, physical and earth science. Holidays were designated for study at each K-5 grade level, and teacher reps wrote lesson plans and selected materials including appropriate trade books to support the lessons. These will be ordered for use beginning in the fall. Professional development time was devoted to familiarizing teachers with the rationale and instructional strategies for the lessons.

At the secondary level middle school math and language arts teachers continue to align their curriculum and pacing guides to the Common Core State Standards (CCSS). The curriculum department refined the selection process to identify the appropriate students for middle school accelerated and advanced courses. The Sixth Grade Math course aligned instructional resources to the CCSS. Introduction to College Math was implemented at Adams High School this past school year and is running in all three high schools. High school math teachers have been meeting to review the CCSS for math and aligning them to their instructional resources. High school math teachers implemented performance tasks in their classrooms each semester. High school language arts continue to refine their units of study as they align their curriculum to the CCSS for English language arts.

Middle school science and social studies teachers added activities to their curriculum, and adjusted pacing guides and summative assessments to include the Literacy Standards for Science, Social Studies and Technology. This work will be ongoing because the Next Generation Science and the MC3 Social Studies standards have not been approved, to date. High School science and social studies teachers continue to integrate the literacy standards into their units of study as they wait for a final decision about the adoption of their new standards. Ninth graders participated in a pilot course called Big History. This course addresses the content expectations for world history, while integrating other disciplines, such as science into the units. Big History was designed around the 9th and 10th grade Common Core literacy standards. This course will be offered again to 9th graders for the 2014-15 school year.

Additional information about the District's Core curriculum can be found at the following website:  
<http://www.rochester.k12.mi.us/pages/5064/general-education>.

## Student Achievement Results from District Assessments

### 2013-2014 Kindergarten

Rochester Community School District

Assessment	'Below Standard'			'At or Above Standard'			Total		
	#	%	Avg	#	%	Avg	#	%	Avg
MLPP Spelling - K	51	5.33	5.94	905	94.67	19.78	956	100	19.03
MLPP PA 3: Segmenting - K	46	4.71	0.72	931	95.29	7.88	977	100	7.54
MLPP PA 2: Blending - K	18	1.83	0.77	966	98.17	15.71	984	100	15.43
MLPP Oral Reading - K	35	3.75	0.68	899	96.25	4.88	934	100	4.73
MLPP Sound ID - K	6	0.8	3.67	748	99.2	25.23	754	100	25.06
MLPP Concepts of Print - K	2	0.28	3	704	99.72	20.3	706	100	20.26
MLPP PA 1: Rhyme - K	37	4	2.53	888	96	15.01	925	100	14.5
MLPP Letter ID - K	0	0	0	926	100	52.22	926	100	52.21
Writing Narrative - K	58	8.38	0.98	634	91.62	2.72	692	100	2.57
Writing Informative - K	31	4.15	0.97	716	95.85	2.96	747	100	2.87

### 2012-2013 Kindergarten

Rochester Community School District

Assessment	'Below Standard'			'At or Above Standard'			Total		
	#	%	Avg	#	%	Avg	#	%	Avg
MLPP Writing - K	43	4.51	1	911	95.49	3.11	954	100	3.02
MLPP Spelling - K	55	5.96	6.86	868	94.04	18.87	923	100	18.16
MLPP Sound ID - K	2	0.21	7	932	99.79	25.51	934	100	25.47
MLPP PA 3: Segmenting - K	66	6.93	0.67	887	93.07	7.84	953	100	7.34
MLPP PA 2: Blending - K	17	1.75	0.93	954	98.25	15.57	971	100	15.32
MLPP PA 1: Rhyme - K	18	1.85	1.33	957	98.15	15.63	975	100	15.36
MLPP Oral Reading - K	54	5.54	0.56	921	94.46	5.01	975	100	4.76
MLPP Letter ID - K	0	0	0	976	100	53.54	976	100	53.54
MLPP Concepts of Print - K	3	0.31	2	970	99.69	20.55	973	100	20.5

## 2013-2014 1<sup>st</sup> Grade

Rochester Community School District

Assessment	'Below Standard'			'At or Above Standard'			Total		
	#	%	Avg	#	%	Avg	#	%	Avg
Math - 1	93	9.78	55.61	858	90.22	89.59	951	100	86.27
MLPP Spelling - 1	41	8.37	23.44	449	91.63	40.75	490	100	39.31
MLPP Sound ID - 1	11	1.28	17.18	848	98.72	26	859	100	25.88
MLPP Sight Word - 1	112	11.32	40.36	877	88.68	86.44	989	100	81.22
MLPP PA 5: Substitution - 1	141	14.19	2.45	853	85.81	7.36	994	100	6.67
MLPP PA 4: Deletion - 1	69	6.96	2.49	923	93.04	8.35	992	100	7.94
MLPP PA 3: Segmenting - 1	15	1.69	3	872	98.31	7.98	887	100	7.9
MLPP PA 2: Blending - 1	0	0	0	911	100	15.68	911	100	15.68
MLPP PA 1: Rhyme - 1	2	0.22	3.5	910	99.78	15.42	912	100	15.39
MLPP Oral Reading - 1	52	5.09	3.78	969	94.91	10.21	1021	100	9.88
MLPP Letter ID - 1	0	0	0	838	100	52.77	838	100	52.76
1st Grade Math CCSS	5	4.24	61.79	113	95.76	92.12	118	100	90.82
Writing Narrative - 1	43	4.84	0.87	845	95.16	2.86	888	100	2.77
Writing Informative - 1	53	5.75	0.98	868	94.25	2.82	921	100	2.72

## 2012-2013 1<sup>st</sup> Grade

Rochester Community School District

Assessment	'Below Standard'			'At or Above Standard'			Total		
	#	%	Avg	#	%	Avg	#	%	Avg
Math - 1	113	12.05	55.81	825	87.95	90.04	938	100	85.91
MLPP Writing - 1	33	3.24	1	984	96.76	2.99	1017	100	2.92
MLPP Spelling - 1	40	6.72	23.93	555	93.28	45.77	595	100	44.3
MLPP Sound ID - 1	7	0.9	18.86	772	99.1	26.76	779	100	26.68
MLPP Sight Word - 1	137	13.52	38.43	876	86.48	85.58	1013	100	79.21
MLPP PA 5: Substitution - 1	151	15.21	2.53	842	84.79	7.36	993	100	6.63
MLPP PA 4: Deletion - 1	77	7.77	2.81	914	92.23	7.44	991	100	7.08
MLPP PA 3: Segmenting - 1	11	1.25	3.35	871	98.75	7.98	882	100	7.92
MLPP PA 2: Blending - 1	1	0.12	0	859	99.88	15.96	860	100	15.94
MLPP PA 1: Rhyme - 1	2	0.24	4.5	837	99.76	15.88	839	100	15.85
MLPP Oral Reading - 1	65	6.43	3.68	946	93.57	10.01	1011	100	9.6
MLPP Letter ID - 1	0	0	0	781	100	52.54	781	100	52.54
MLPP Concepts of Print - 1	1	0.15	10	676	99.85	21.71	677	100	21.7

## 2013-2014 2<sup>nd</sup> Grade

Rochester Community School District

Assessment	'Below Standard'			'At or Above Standard'			Total		
	#	%	Avg	#	%	Avg	#	%	Avg
Math - 2	39	5.56	61.61	662	94.44	90.43	701	100	88.8
MLPP Spelling - 2	47	9.94	40.79	426	90.06	69.66	473	100	66.8
MLPP Sight Word - 2	47	4.79	53.83	935	95.21	96.38	982	100	94.4
MLPP PA 5: Substitution - 2	17	3.85	3.41	424	96.15	7.82	441	100	7.65
MLPP PA 4: Deletion - 2	10	2.28	3.29	428	97.72	7.78	438	100	7.67
MLPP PA 3: Segmenting - 2	6	2.74	4.5	213	97.26	7.98	219	100	7.89
MLPP PA 2: Blending - 2	0	0	0	214	100	15.89	214	100	15.9
MLPP Oral Reading - 2	82	8.3	8.18	906	91.7	14.03	988	100	13.6
2nd Grade Math CCSS	16	4.69	65.94	325	95.31	92.18	341	100	90.9
Writing Narrative - 2	55	6.28	1	821	93.72	2.91	876	100	2.78
Writing Informative - 2	36	3.83	1	905	96.17	2.91	941	100	2.83

## 2012-2013 2<sup>nd</sup> Grade

Rochester Community School District

Assessment	'Below Standard'			'At or Above Standard'			Total		
	#	%	Avg	#	%	Avg	#	%	Avg
MLPP Writing - 2	77	8.11	1.86	873	91.89	4.13	950	100	3.94
MLPP Spelling - 2	56	12.1	40.63	407	87.9	71.27	463	100	67.57
MLPP Sight Word - 2	35	3.69	54.2	913	96.31	97.91	948	100	96.3
MLPP PA 5: Substitution - 2	17	4.21	4	387	95.79	7.8	404	100	7.63
MLPP PA 4: Deletion - 2	12	3.12	3.75	373	96.88	7.82	385	100	7.69
MLPP PA 3: Segmenting - 2	2	0.9	2.5	220	99.1	8	222	100	7.95
MLPP PA 2: Blending - 2	0	0	0	247	100	16	247	100	16
MLPP PA 1: Rhyme - 2	1	0.41	2	245	99.59	15.96	246	100	15.9
MLPP Oral Reading - 2	72	7.25	7.67	921	92.75	14.02	993	100	13.56
Math - 2	33	4.62	60.54	681	95.38	90.22	714	100	88.84
2nd Grade Math CCSS	10	3.51	66.59	275	96.49	92.87	285	100	91.95

## 2013-2014 3<sup>rd</sup> Grade

Rochester Community School District

Assessment	'Below Standard'			'At or Above Standard'			Total		
	#	%	Avg	#	%	Avg	#	%	Avg
MLPP Spelling - 3	2	4.17	42.5	46	95.83	68.61	48	100	67.52
MLPP Oral Reading - 3	177	16.57	13.13	891	83.43	17.59	1068	100	16.85
3rd Grade Math CCSS	260	24.86	63.75	786	75.14	89.01	1046	100	82.73
Writing Narrative - 3	46	4.54	1	967	95.46	2.92	1013	100	2.83
Writing Informative - 3	33	3.23	1	988	96.77	3.09	1021	100	3.03

## 2012-2013 3<sup>rd</sup> Grade

Rochester Community School District

Assessment	'Below Standard'			'At or Above Standard'			Total		
	#	%	Avg	#	%	Avg	#	%	Avg
MLPP Writing - 3	91	8.62	1.76	965	91.38	4.15	1056	100	3.94
MLPP Spelling - 3	0	0	0	103	100	71.98	103	100	71.98
MLPP Oral Reading - 3	197	18.55	12.93	865	81.45	17.62	1062	100	16.75
3rd Grade Math CCSS	198	18.88	63.09	851	81.12	89.08	1049	100	84.18

## 2013-2014 4<sup>th</sup> Grade

Rochester Community School District

Assessment	'Below Standard'			'At or Above Standard'			Total		
	#	%	Avg	#	%	Avg	#	%	Avg
MLPP Spelling - 4	8	8.79	54.8	83	91.21	80.47	91	100	78.2
MLPP Oral Reading - 4	163	15.51	15.2	888	84.49	20.37	1051	100	19.6
4th Grade Math CCSS	234	23.54	62.3	760	76.46	89.26	994	100	82.9
Writing Narrative - 4	39	4.29	1	871	95.71	3.02	910	100	2.94
Writing Informative - 4	38	3.71	0.88	987	96.29	3.19	1025	100	3.1

## 2012-2013 4<sup>th</sup> Grade

Rochester Community School District

Assessment	'Below Standard'			'At or Above Standard'			Total		
	#	%	Avg	#	%	Avg	#	%	Avg
MLPP Writing - 4	80	7.68	1.64	961	92.32	4.21	1041	100	4.01
MLPP Spelling - 4	9	10.84	51.43	74	89.16	82.41	83	100	79.03
MLPP Oral Reading - 4	202	18.3	15.57	902	81.7	20.42	1104	100	19.53
4th Grade Math CCSS	290	27.57	61.25	762	72.43	89.12	1052	100	81.43



## 2013-2014 5<sup>th</sup> Grade

Rochester Community School District

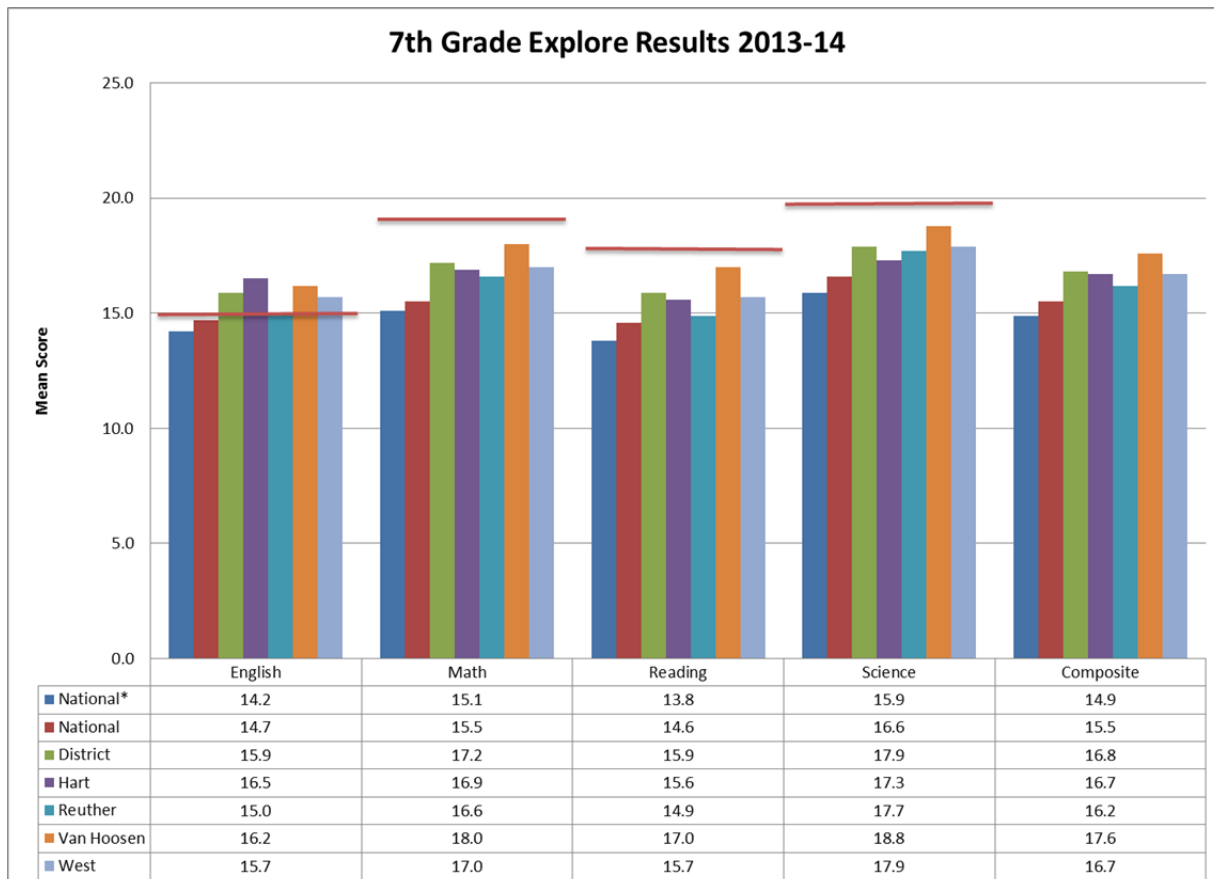
Assessment	'Below Standard'			'At or Above Standard'			Total		
	#	%	Avg	#	%	Avg	#	%	Avg
MLPP Spelling - 5	16	10.81	60.4	132	89.19	82.48	148	100	80.09
MLPP Oral Reading - 5	220	20.52	18.6	852	79.48	23.5	1072	100	22.5
5th Grade Math CCSS	220	23.01	56.8	736	76.99	86.51	956	100	79.66
Writing Narrative - 5	44	3.95	0.98	1071	96.05	2.97	1115	100	2.89
Writing Informative - 5	33	2.99	1	1072	97.01	3.13	1105	100	3.06

## 2012-2013 5<sup>th</sup> Grade

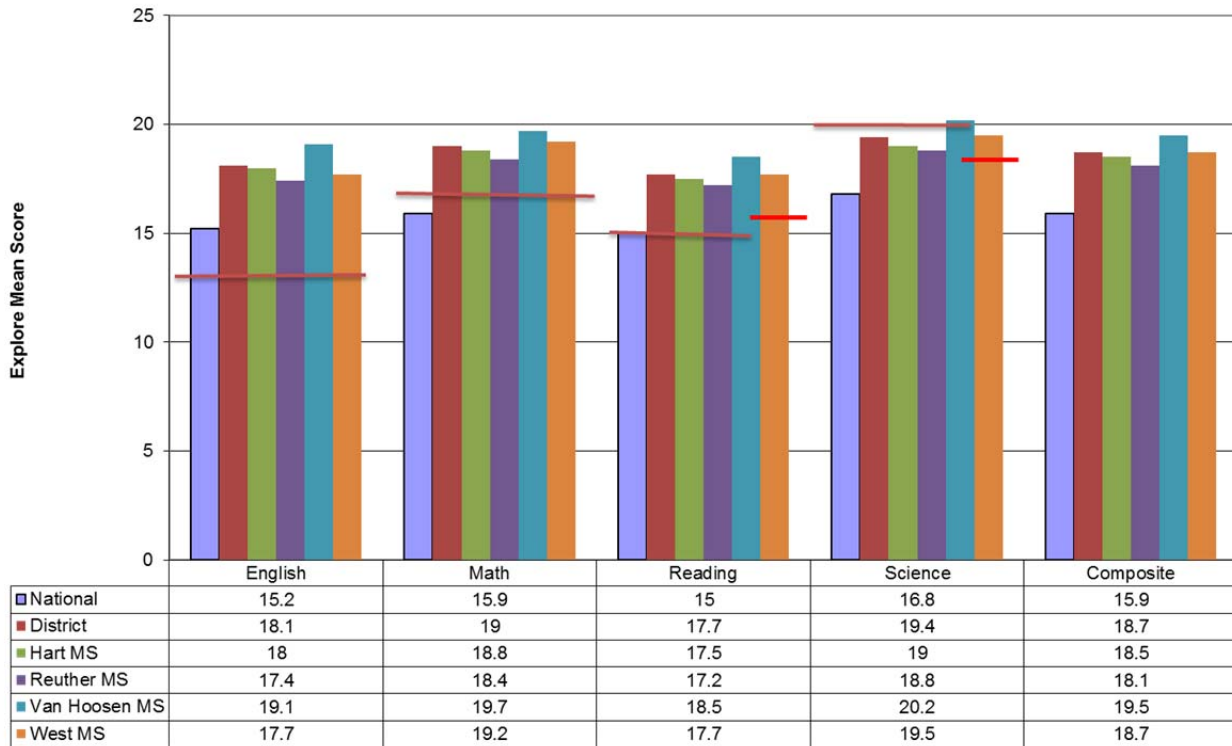
Rochester Community School District

Assessment	'Below Standard'			'At or Above Standard'			Total		
	#	%	Avg	#	%	Avg	#	%	Avg
MLPP Writing - 5	99	9.04	1.85	996	90.96	4.23	1095	100	4.01
MLPP Spelling - 5	18	11.84	61.88	134	88.16	82.06	152	100	79.67
MLPP Oral Reading - 5	212	20.29	18.68	833	79.71	23.48	1045	100	22.51
5th Grade Math CCSS	315	30.52	61.15	717	69.48	88.79	1032	100	80.35

## Student Achievement Results from Nationally Normed Tests

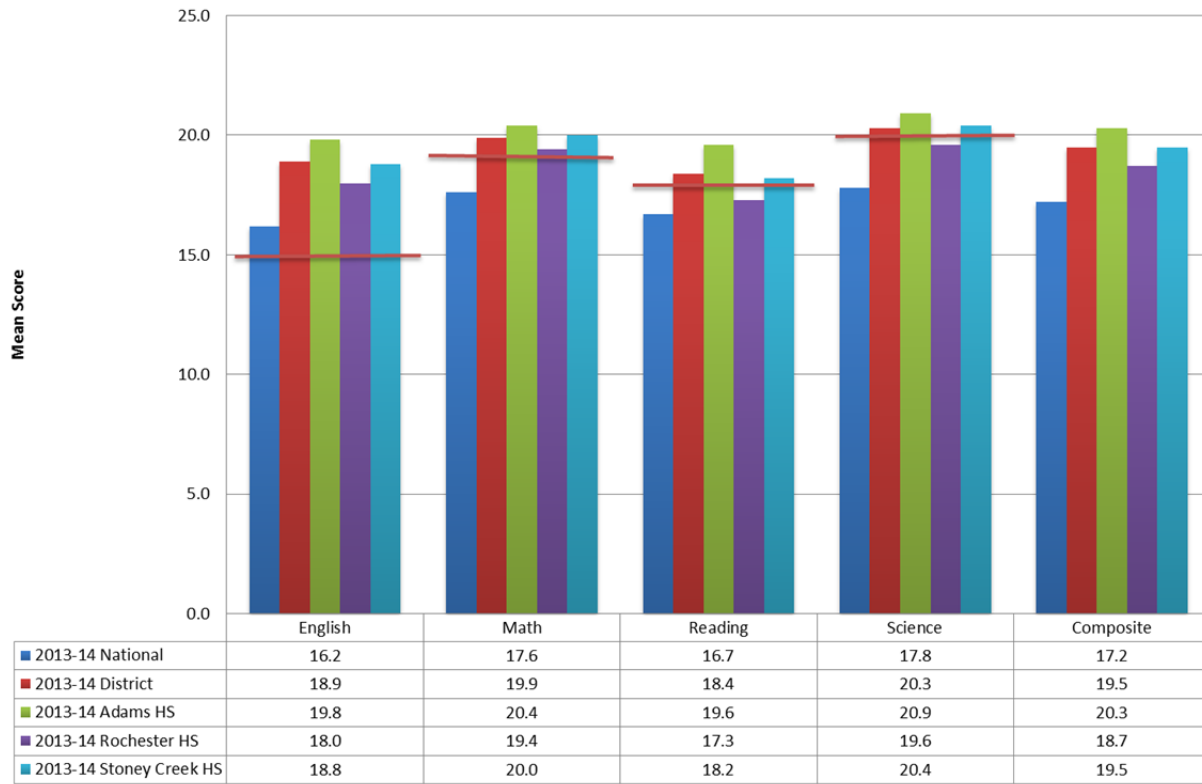


### 8th Grade Explore 2013-14



### 9th Grade PLAN 2013-14

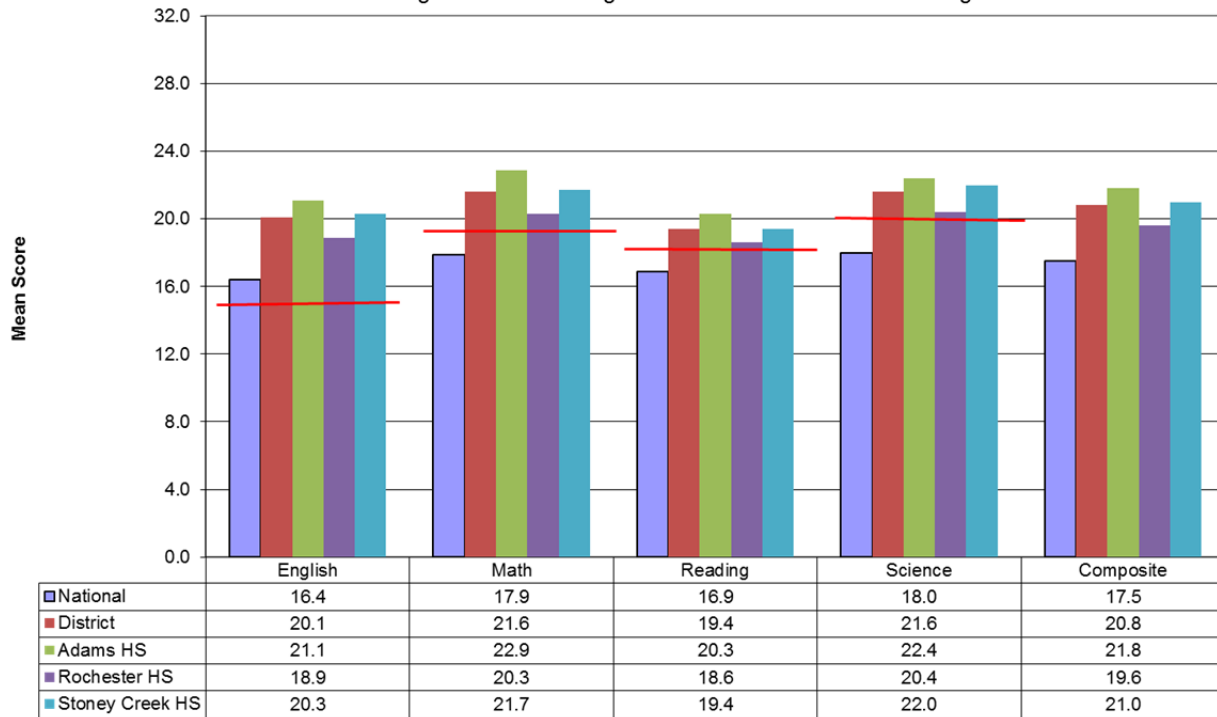
Red Lines indicate College Readiness Benchmarks for 10th grade students.  
 In 2013-14 the Reading Benchmark changed from 17 to 18 and Science changed from 21 to 20.



### 10th Grade PLAN Results 2013-14

Red Lines indicate College Readiness Benchmarks..

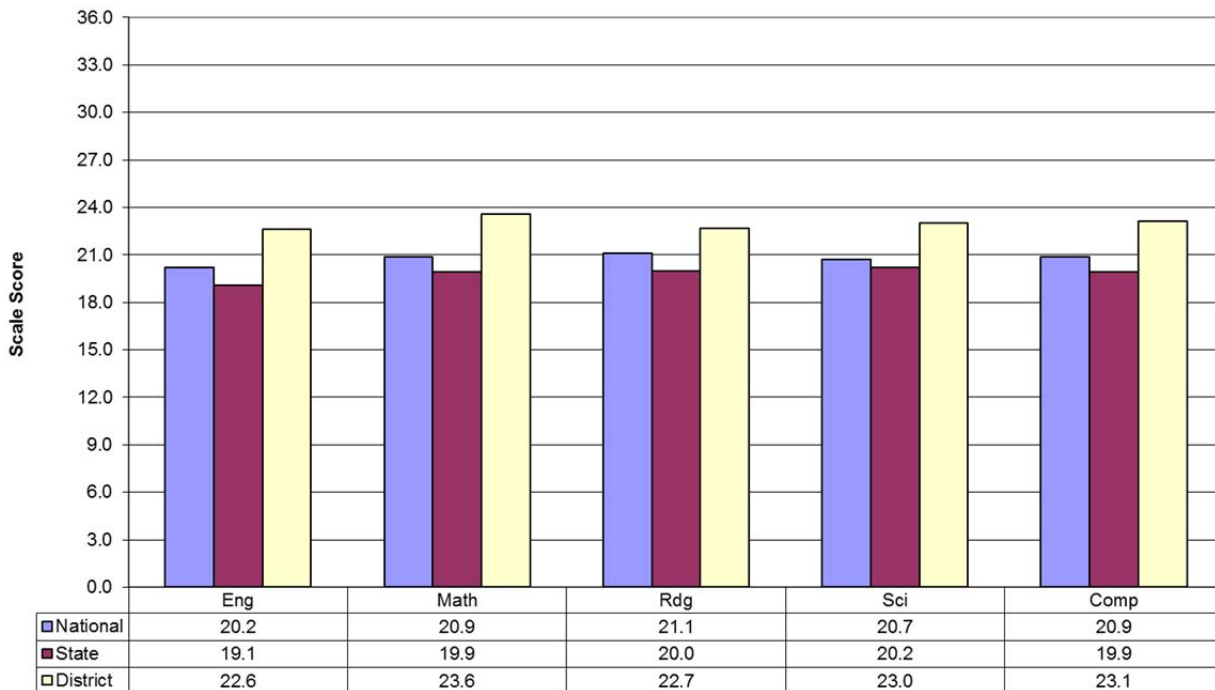
In 2013-14 the Reading Benchmark changed from 17 to 18 and Science changed from 21 to 20.



### ACT

At time of printing, the Class of 2014 ACT data was not available.

### Rochester Community Schools Average ACT Scores Class of 2013

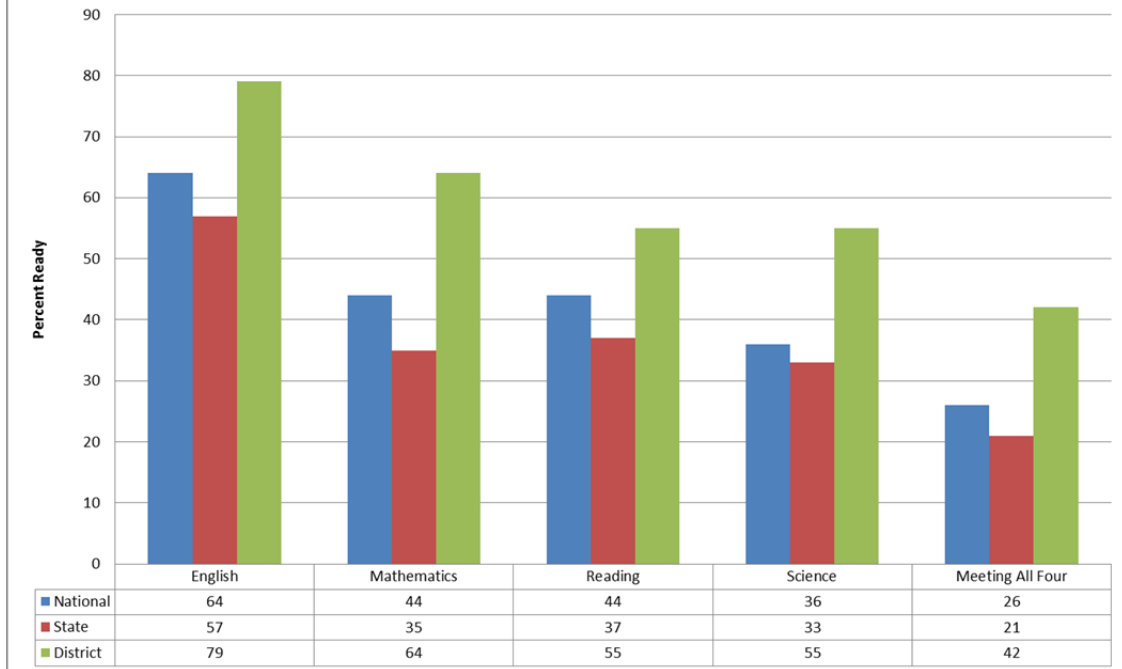


**Rochester Community Schools Composite ACT Scores  
Class of 2009-2013**



**Percent of ACT College Ready Students  
RCS Graduating Class of 2013**

In 2013-14 two of the ACT College Readiness Benchmarks changed.  
Reading was increased from 21 to 22, Science was decreased from 24 to 23.

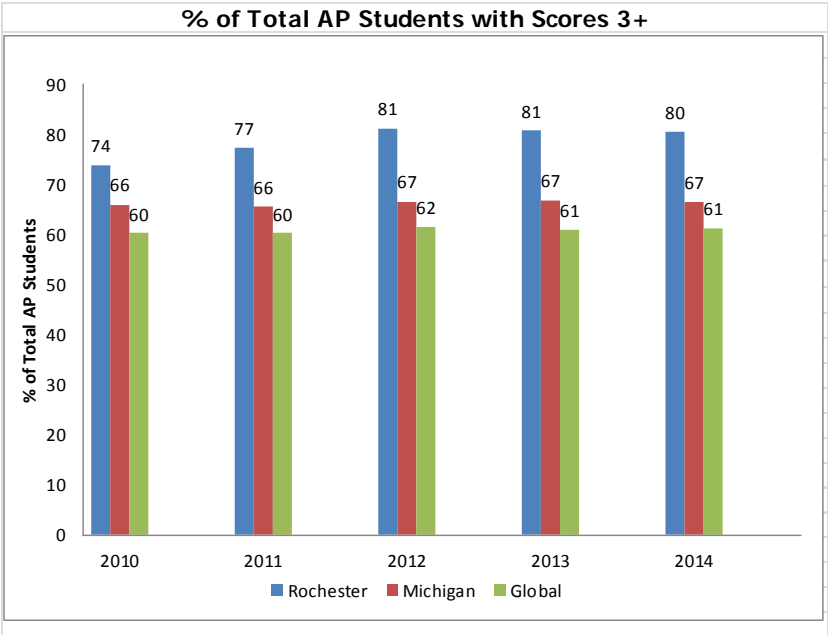


## Advanced Placement

### RCS Students Enrolled in AP Courses by Grade Level

2013-2014		# of students in one or more AP course	School enrollment numbers	Percent
10th, 11th & 12th	Adams HS	580	1155	50.22%
	Stoney Creek HS	531	1261	42.11%
	Rochester HS	508	1222	41.57%
	District Totals	1619	3638	44.50%
10th Grade	Adams HS	121	417	29.02%
	Stoney Creek HS	46	422	10.90%
	Rochester HS	83	385	21.56%
	District Totals	250	1224	20.42%
11th Grade	Adams HS	234	368	63.59%
	Stoney Creek HS	227	414	54.83%
	Rochester HS	191	400	47.75%
	District Totals	652	1182	55.16%
12th Grade	Adams HS	225	370	60.81%
	Stoney Creek HS	258	425	60.71%
	Rochester HS	234	437	53.55%
	District Totals	717	1232	58.20%

**Rochester Community Schools**  
**AP Five-Year District**  
**Score Summary**



	2010	2011	2012	2013	2014
<b>Rochester Community Schools</b>					
Total AP Students	791	893	1,167	1,340	1,398
Number of Exams	1,368	1,672	1,990	2,426	2,551
AP Students with Scores 3+	585	690	948	1,082	1,124
% of Total AP Students with Scores 3+	73.9	77.3	81.2	80.7	80.4
<b>Michigan</b>					
Total AP Students	45,693	48,910	52,736	55,115	57,544
Number of Exams	73,195	79,003	84,396	89,852	94,149
AP Students with Scores 3+	30,162	32,033	35,142	36,869	38,260
% of Total AP Students with Scores 3+	66.0	65.5	66.6	66.9	66.5
<b>Global</b>					
Total AP Students	1,855,310	1,982,133	2,106,843	2,225,625	2,345,553
Number of Exams	3,236,335	3,475,395	3,714,079	3,955,410	4,182,988
AP Students with Scores 3+	1,116,959	1,193,662	1,295,051	1,354,800	1,437,576
% of Total AP Students with Scores 3+	60.2	60.2	61.5	60.9	61.3

## Dual Enrollment Information

			Number of Students Dual Enrolled	School Enrollment Numbers	Percent
<b>2013-2014</b>	10 <sup>th</sup> Grade	Adams High School	1	417	0.24%
		Stoney Creek High School	0	419	0.00%
		Rochester High School	0	390	0.00%
		<b>DISTRICT TOTALS</b>	<b>1</b>	<b>1,226</b>	<b>0.08%</b>
	11 <sup>th</sup> Grade	Adams High School	2	371	0.54%
		Stoney Creek High School	0	415	0.00%
		Rochester High School	3	391	0.77%
		<b>DISTRICT TOTALS</b>	<b>5</b>	<b>1,177</b>	<b>0.42%</b>
	12 <sup>th</sup> Grade	Adams High School	20	370	5.41%
		Stoney Creek High School	9	423	2.13%
		Rochester High School	6	436	1.37%
		<b>DISTRICT TOTALS</b>	<b>35</b>	<b>1,229</b>	<b>2.85%</b>
<b>2012-2013</b>	11 <sup>th</sup> Grade	Adams High School	4	371	1.08%
		Stoney Creek High School	1	427	0.23%
		Rochester High School	2	430	0.47%
		<b>DISTRICT TOTALS</b>	<b>7</b>	<b>1,228</b>	<b>0.57%</b>
	12 <sup>th</sup> Grade	Adams High School	10	367	2.72%
		Stoney Creek High School	4	409	0.98%
		Rochester High School	3	368	0.82%
		<b>DISTRICT TOTALS</b>	<b>17</b>	<b>1,144</b>	<b>1.49%</b>

## Parent Involvement

The Board of Education recognizes that a student's education is a responsibility shared by the school and family during the entire period the student attends school. Over the years, research has proven that there is a direct relationship between parent involvement and student achievement. To support the goal of the school district to help all students succeed, schools and parents must work together as active partners.

Although parents are diverse in culture, language, and needs, they share the schools' commitment to the educational success of their student. Rochester Community Schools' administration and school staff, in collaboration with parents, shall establish programs and practices that enhance parent involvement and reflect the needs of students and their families.

To this end, the Board of Education supports the ongoing development, implementation and evaluation of parent involvement practices that are based on best practice, and are in alignment with national standards. Parent involvement programs have been implemented at both the District and the school level.

The Superintendent/Designee has established a regulation to implement this policy which will include, but not be limited to, the following components of successful parent involvement programs adopted by National PTA:

- Communication between home and school/District is regular, two-way, and meaningful
- Responsible parenting is promoted and supported
- Parents play an integral role in assisting student learning
- Parents are welcome in the school/District, and their support and assistance are sought
- Parents are full partners in the decisions that affect students and families
- Community resources are made available to strengthen school programs, family practices, and student learning.

### **Points of Pride**

- Rochester Community Schools scores in the top 5% of districts participating in state assessments.
- Composite MEAP scores are well above the state and county averages.
- The Rochester Community Schools Foundation received over \$500,000 in donations to support arts, academics and athletics throughout the district.
- Rochester Community Schools maintains a strong relationship with parents, community members and businesses.
- Schools hold blood drives, raise money for charity, collect food and clothing for the less fortunate, and send supplies to needy schools here and abroad in order to give back to the community.
- Twenty-one of our schools have been newly built or renovated to provide state-of-the-art educational facilities for our students and staff thanks to community support for bond millages in 1997, 2000 and 2004.
- The Rochester Community Schools Adult Education program offers GED, high school completion and English as a Second Language courses.
- Before and after school childcare is offered at all elementary and middle schools.
- Children's Programs offers a comprehensive pre-school program that is child-centered and aligned with the Rochester Community Schools kindergarten curriculum.
- The Rochester Community Schools Enrichment Department offers a wide variety of recreation and life long learning classes for both youth and adults.
- Online learning opportunities for students are available at Rochester, Adams and Stoney Creek High Schools.
- Over 60% of our student athletes are scholar athletes with a GPA of 3.3 or higher.
- Adams, Rochester and Stoney Creek High School band, choir and art students received state and national recognition.



Rochester Community Schools is pleased to share this report with the community. We encourage you to review the complete Annual Education Report for more detailed information. This has been an exciting, productive year with the development of a new Strategic Plan which will set the direction of our District for several years to come and lead us to become a world-class educational system. The success of our student's and schools is due to the support of the community, the strong partnership with parents and the dedication of our staff. Thank you!

Sincerely,

Robert Shaner, Ph.D

**Rochester Community Schools  
Executive Staff**

Superintendent – Dr. Robert Shaner  
Assistant Superintendent for Instruction – Debi Fragomeni  
Assistant Superintendent for Business – Daniel Romzek  
Chief Human Resource Officer – Elizabeth Davis

**Rochester Community Schools  
Board of Education  
2013-2014**

President – Lisa Nowak  
Vice President – Chuck Coutteau  
Secretary – Michael Zabat  
Treasurer – Jane Pierobon  
Trustee – Jennifer Berwick  
Trustee – Pat Piskulich  
Trustee – Beth Talbert